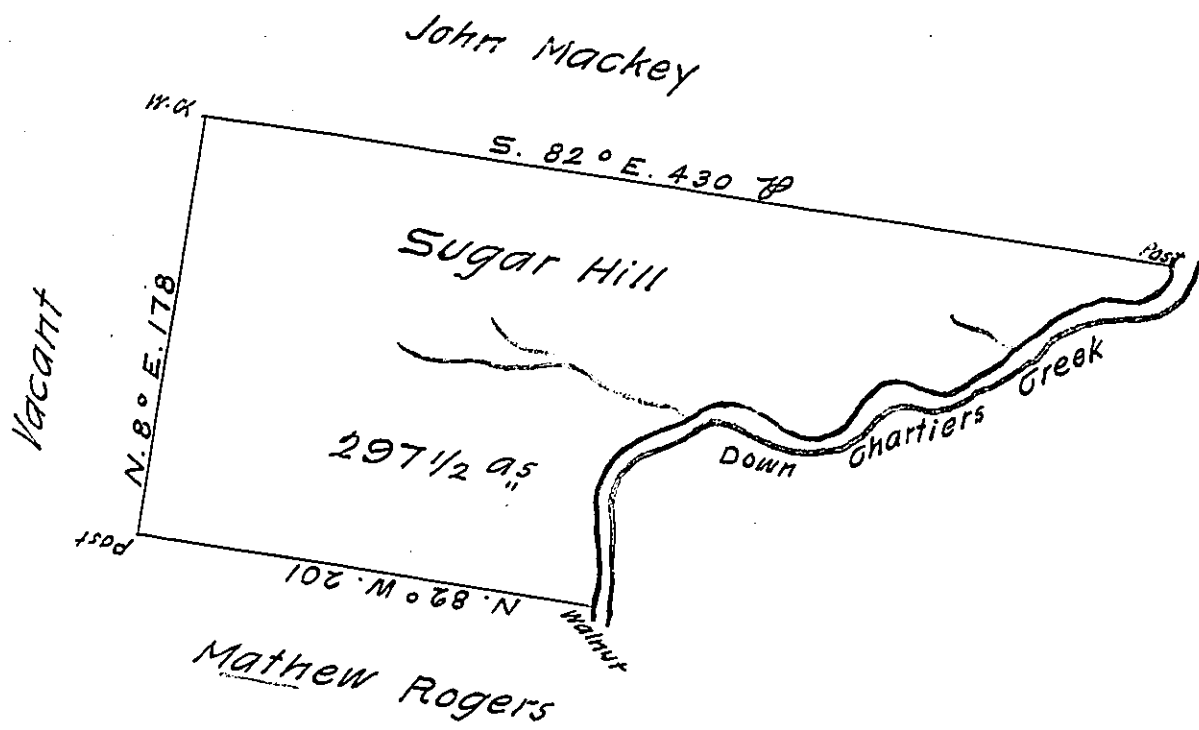


Courses up Char. Cr.
 Beg. at a post & running

- 5.28° W. 16 ♂
- West 18 ♂
- 5.78 W. 26 ♂
- 5.45 W. 30 ♂
- 5.60 W. 27 ♂
- N. 66 W. 26 ♂
- 5.45 W. 32 ♂
- 5.75 W. 8 ♂
- West 8 ♂
- N. 60 W. 32 ♂
- 5.62 W. 14 ♂
- 5.56 W. 62 ♂
- South 51 ♂
- to a walnut
- 352



In pursuance of an order No 3136 dated 21st Ap^l 1769 the
 is a draught of a
 above tract of land call'd Sugarhill, containing 297.2. ~~16~~ acres
 with the usual allowance of 6 ♂ C. for roads &c. situated on
 the West side Monongahala — survey'd for Robert Craig
 31st October 1769.

James Hendricks

To John Lukens Esq^t
 Surveyor Gen^l

IN TESTIMONY that the above is a copy of the original remaining on file in
 the Department of Internal Affairs of Pennsylvania, made
 conformably to an Act of Assembly approved the 16th day of
 February, 1833, I have hereunto set my Hand and caused
 the Seal of said Department to be affixed at Harrisburg,
 this third day of October 1911

Nancy Fowler,
 Secretary of Internal Affairs.